



**PRO-CAST**

Solid Foundations,  
Strong Futures.

**PRECAST  
CONCRETE  
SOLUTIONS**

**CONCRETE SHEETPILES**



# INTRODUCTION

Welcome to Pro-Cast, your trusted partner in delivering top-notch precast concrete solutions tailored to meet your specific needs. As a leading provider in the industry, Pro-Cast prides itself on its commitment to excellence, innovation, and customer satisfaction. With a focus on quality, reliability, and versatility, we stand ready to exceed your expectations and contribute to the success of your projects.

Precast concrete sheet pile walls offer faster and more economical retaining solutions compared to conventional methods like RC, diaphragm, contiguous bored pile, secant pile, and steel sheet pile walls. With distinct technical advantages, they're popular for both temporary and permanent structures.

## ADVANTAGES OF PRECAST CONCRETE SHEETPILES

- Long Serviceable Life
- Less Corrosion Worries
- Maintenance Free
- Flexible Sizes & Lengths
- High Performance
- Aesthetic Appearance

## APPLICATION

### Temporary Structure :

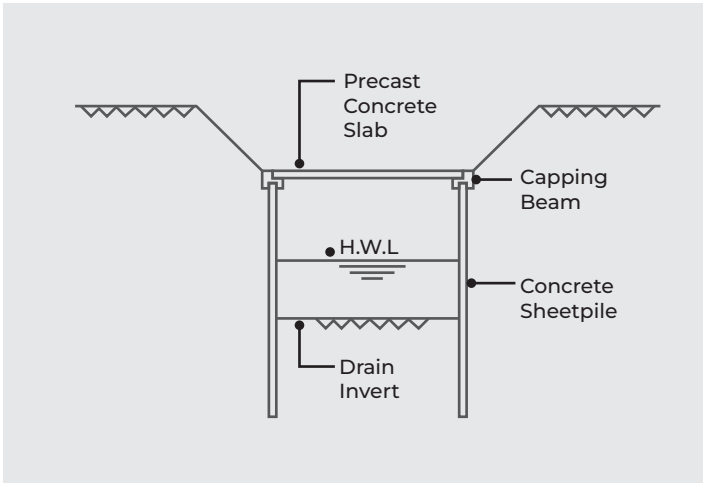
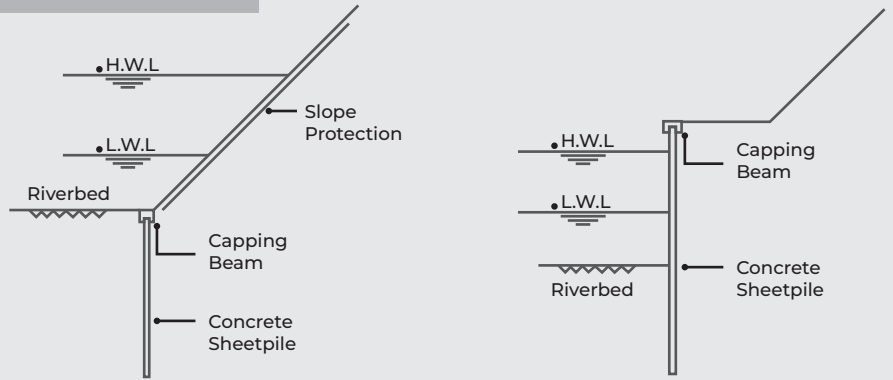
Utilized for shoring during construction and basement excavation.

### Permanent Structure :

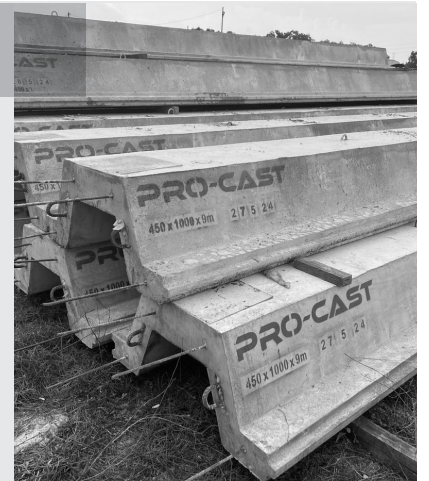
Used for various applications including river embankments, wharf/quay walls, sea walls, revetments, foot/scour protection, cut-off walls, bund construction, road/railway embankments, sewerage/drainage trenches, storage ponds, and more.



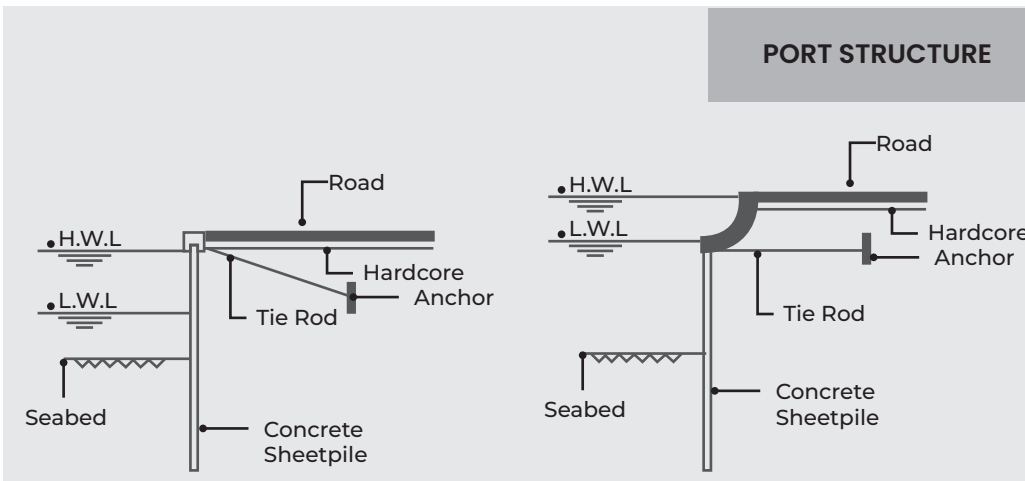
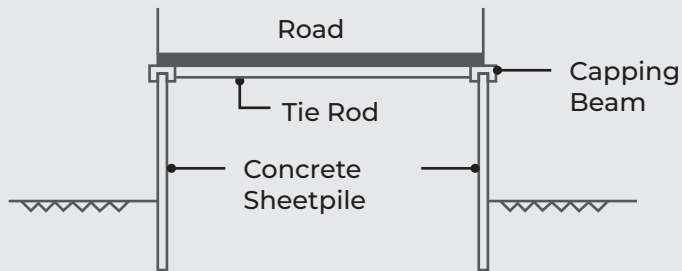
**RIVER EMBANKMENT**



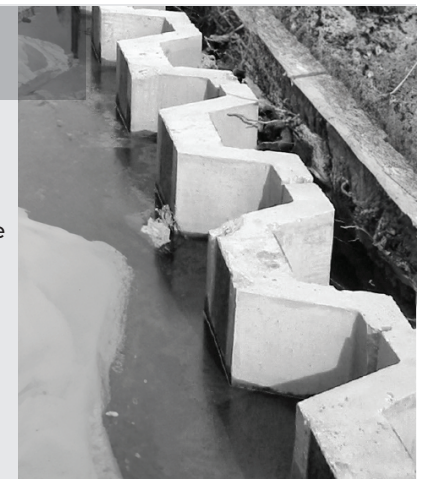
**DRAIN / CULVERT**



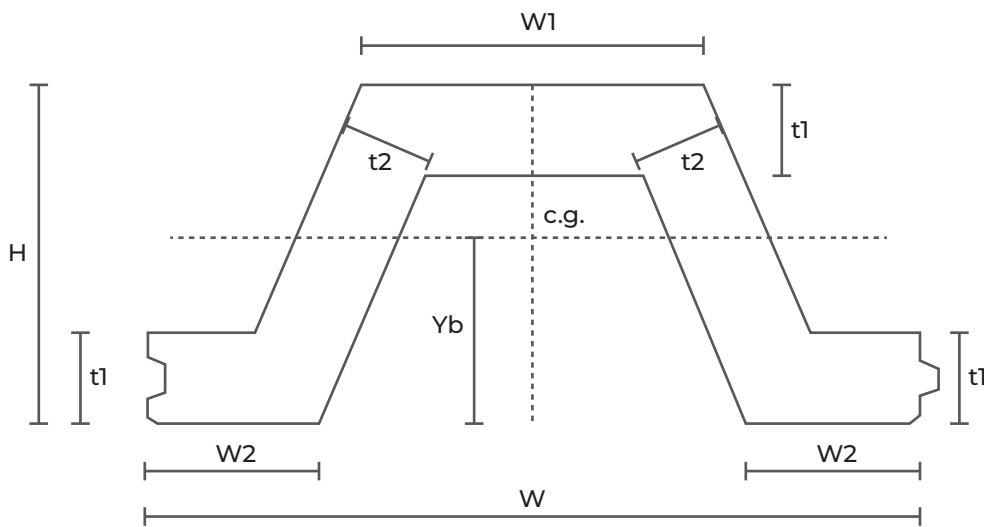
**ROAD / RAILWAY EMBANKMENT**



**PORT STRUCTURE**



# CORRUGATED SHAPE PROFILE : TYPES & PROPERTIES



## Type & Sizes :

H (mm)	W (mm)	W1 (mm)	W2 (mm)	t1 (mm)	Length (mm)
450	1000	440	220	120	6m, 7.5m, 9m
500	1200	500	250	150	6m, 7.5m, 9m, 12m, 15m
600	1200	600	265	165	9m, 12m, 15m

## Design Specification

<b>Structure Design Code</b>	BS8110 : Part1 : 1997
<b>Cement Design Code</b>	MS522
<b>Steel Design Code</b>	MS146
<b>Aggregate Design Code</b>	MS29
<b>Admixture Design Code</b>	MS922

# PRO-CAST

Professional Precast Sdn Bhd

☎ +6 016-330 8365

☎ 03-2276 5255

🌐 [www.pro-cast.co](http://www.pro-cast.co)

✉ [lvanseah@pro-cast.co](mailto:lvanseah@pro-cast.co)

📍 12-3A, Level 12, Menara MBMR.

No 1, Jalan Syed Putra, 58000 Kuala Lumpur.