



PRO-CAST

Solid Foundations,
Strong Futures.

PRECAST CONCRETE SOLUTIONS

L-SHAPE RETAINING WALL

INTRODUCTION

The system stability is achieved through passive earth pressure mobilized in front of the embedded toe of the wall. This stability is further enhanced by additional support provided by anchors, ties, and struts, strategically placed at appropriate levels at the back.

APPLICATION

L-Shape units are available in all sizes.

- Retaining Walls
- Temporary or Permanent Storage Walls
- Open Drains

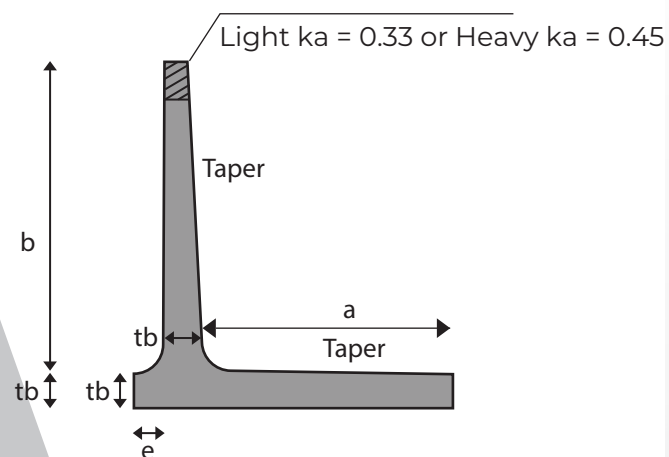
L-Shape units are available with Dry Weather Flow channels for the construction of open drains.

L-Shape units are designed and manufactured through rigorous quality manufacturing processes, thus allowing easy and fast handling and installation processes.

ADVANTAGES

L-Shape units have the following advantages over cast in-situ structures:

- Easily assembled for service elsewhere.
- Reliable factory cast concrete.
- Temporary storage where permanent storage not required or impractical.
- Increase storage capacity.
- Maintenance eliminated.
- Can be off loaded from transport and erected in one operation.
- Assembly or dismantling can be attended to by unskilled labour.



DIMENSION OF L-SHAPE RETAINING WALL

STANDARD LENGTH : 1000 MM

a	b	tb	e
900	900	115	150
1200	1200	115	150
1500	1500	115	150
1800	1800	150	150
2100	2100	150	300
2400	2400	150	300
2700	2700	200	300
3000	3000	200	300
3300	3300	200	300
3600	3600	200	300

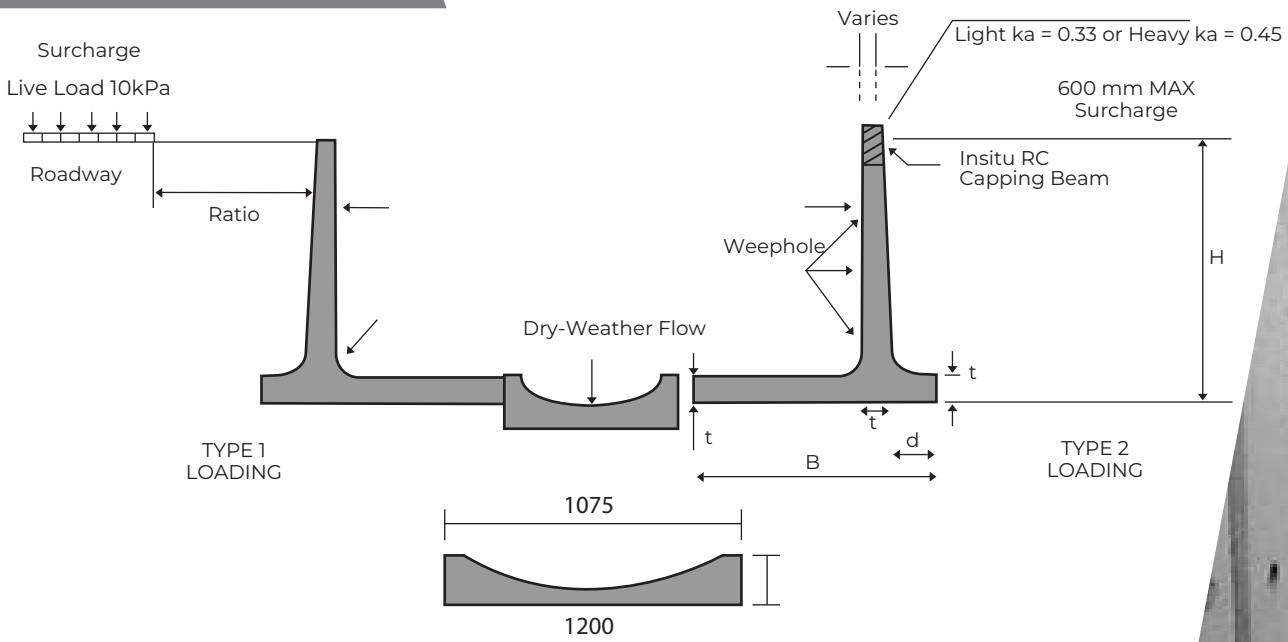
DESIGN & SPECIFICATION

L-Shape units are designed to the requirements of BS 8110:1997 based on the following types of loading:

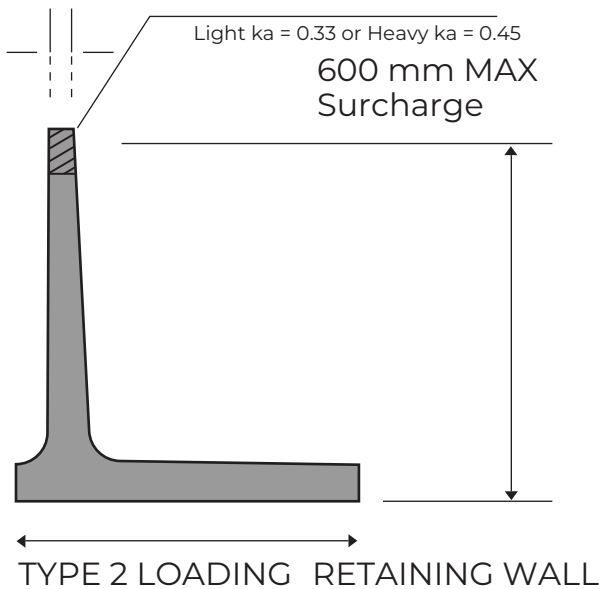
Concrete grade = 30 Mpa - 40 Mpa
Bulk density of soil backfill = 19 Kn/m³
Angle of internal friction of soil backfill = 30°

DETAIL

MAIN DRAIN



L-SHAPE DRAIN RETAINING WALL



PRO-CAST

Professional Precast Sdn Bhd

+6 016-330 8365

03-2276 5255

www.pro-cast.co

lvanseah@pro-cast.co

12-3A, Level 12, Menara MBMR.
No 1, Jalan Syed Putra, 58000 Kuala Lumpur.